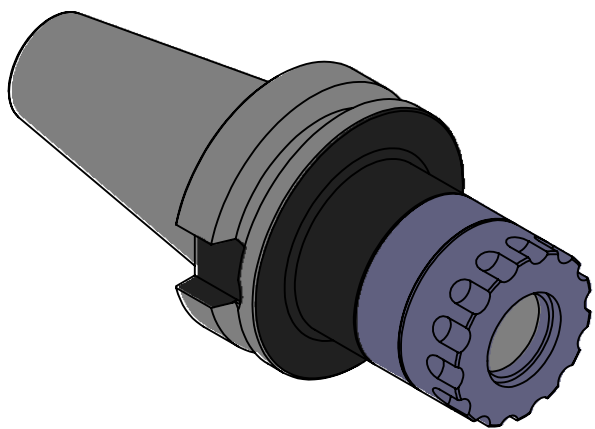
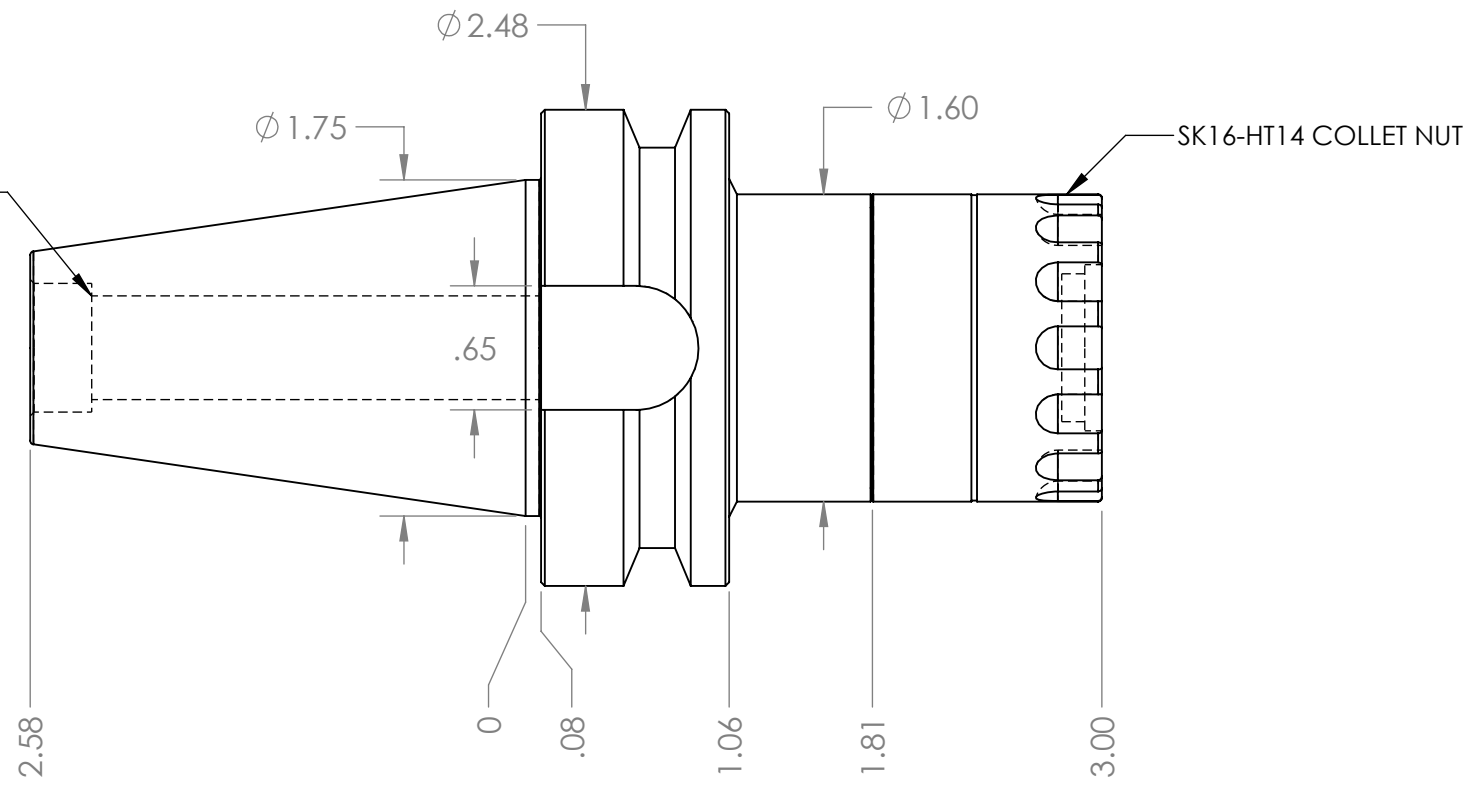


M16 x 2.0 THREAD x 1.25 DEEP
 C'BORE DIA .670 x .320 DEEP



NOTES:
 WORKS ON ALL BT40 MACHINES
 TAKES ALL SK16 COLLETS FROM .09"-.630"
 USES WRENCH PART # HT14-TWA TORQUE WRENCH (NOT INCLUDED)
 FOR MORE PRODUCT DETAILS PLEASE GO TO MARITOO.COM
 AND SEARCH ITEM # LISTED ON THIS PRINT

MARITOO

WWW.MARITOO.COM

ITEM# **BT40 SK16-3.0-HT**

Made in USA